

| REVISIONS | | |
|-----------|-------------------|-------------------|
| No. | DESCRIPTION | DATE |
| A | Planning Revision | 11/11/20 AC AC |

Rev A list of changes

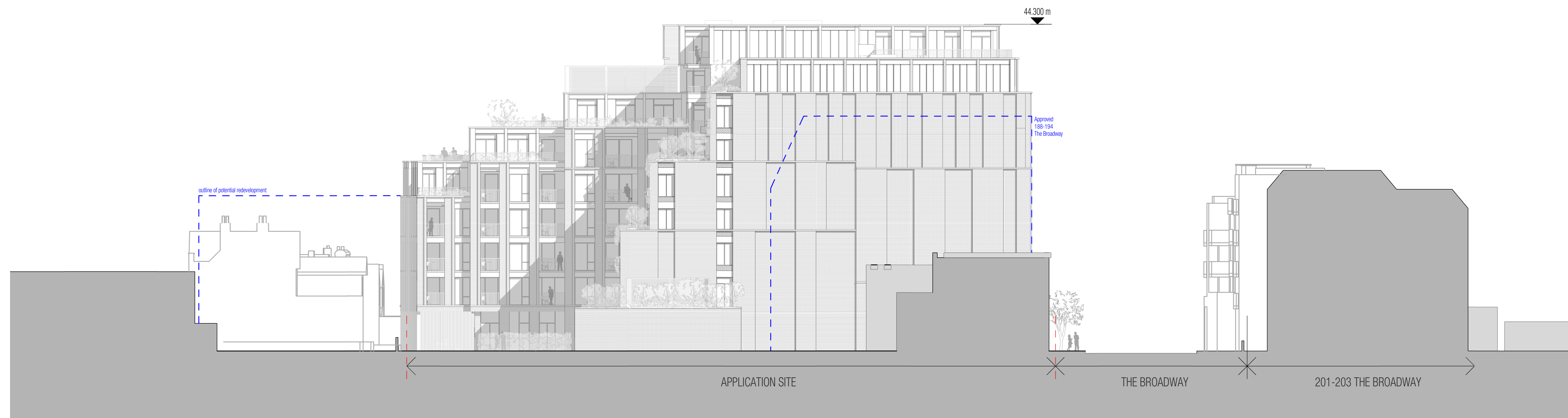
- Reduction in bedroom size in the 1b1p units.
- Addition of 750mm zone around beds in 1b2p central block units.
- Boundary treatment to ground floor duplexes on Trinity Road reduced from 1.5m height to 1.2m.
- Ground floor duplex gardens/bins store reconfiguration.
- Additional side door from servicing corridor to central commercial unit.
- Amendments to the enlarged cycle parking spaces to provide a secured and lockable store.
- Short stay cycle parking relocated from Trinity Road to central piazza.
- Provision of clear link from service yard to residential concierge lobby.
- Windows in YMCA amended to show perforated panels to avoid overlooking.
- Screen aligned with vertical mullions in central block façade facing The Broadway.



Elevation C-C

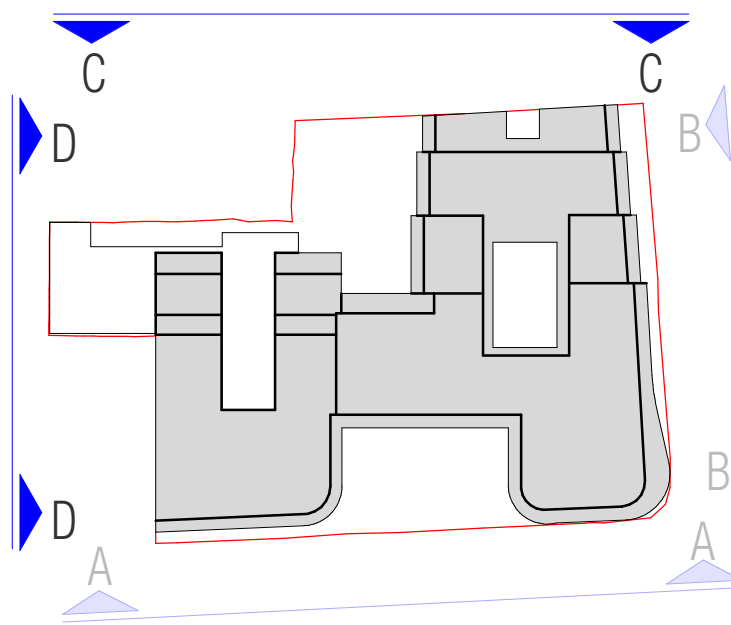
1 : 200
Page 73

Not for construction. All drawings are issued for information purposes only and subject to site survey, further design development, detailed design and building control approval and other statutory approvals. Drawings do not imply confirmation of legal boundaries or Title.



Elevation D-D

1 : 200



ARCHITECTURE

1 Nacroji Street | Clerkenwell | London | WC1X 0GB
0207 553 3030 www.dla-design.co.uk

PROJECT
200 THE BROADWAY, YMCA
LONDON, SW19 1RY

TITLE
Site Elevations C-C&D-D

SCALE
As indicated @ A1

DATE
01/14/20

DLA REF
2018-211

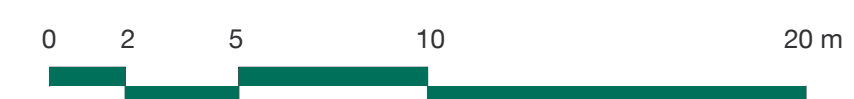
DRAWN
TM

REVIEWED
AC

| PROJECT | ORIGINATOR | ZONE | LEVEL | TYPE | ROLE | NUMBER |
|---------|------------|------|-------|------|------|--------|
| YMCA | DLA | | XX | DR | A | 231 |

STATUS
FOR PLANNING

REVISION
A



This page is intentionally left blank